

STRATEGIC OBJECTIVES

- ✓ Increasing the efficiency of the asset management aiming to increase the value and quality of the assets under management;
- ✓ Increasing the performance of the listed portfolio
- ✓ Increasing the private equity investments

TYPE OF THE INVESTMENT COMPANY

EVERGENT Investments is a Retail Investors Alternative Investment Fund (R.I.A.I.F.) authorized by the Financial Supervisory Authority with the Authorization no. 101 of June 25, 2021.

MANAGEMENT

The company is self-managed in a unitary system, by a Board of Directors.

Executive management:

Claudiu Doros – President and CEO

Catalin Iancu – Vicepresident and Deputy CEO

(FSA authorization no. 59 of April 5, 2021)

IDENTIFICATION DATA

FSA Register no.: PJR09FIAIR/040003

Bucharest Stock Exchange:EVER; ISIN: ROSIFBACNOR0

Bloomberg FIGI: BBG000BMN556

Reuters RIC: ROEVER.BX

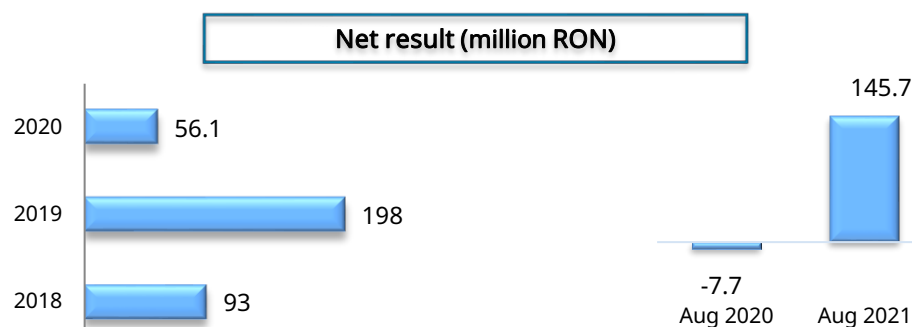
LEI: 254900Y1O0025N04US14

CONTACT

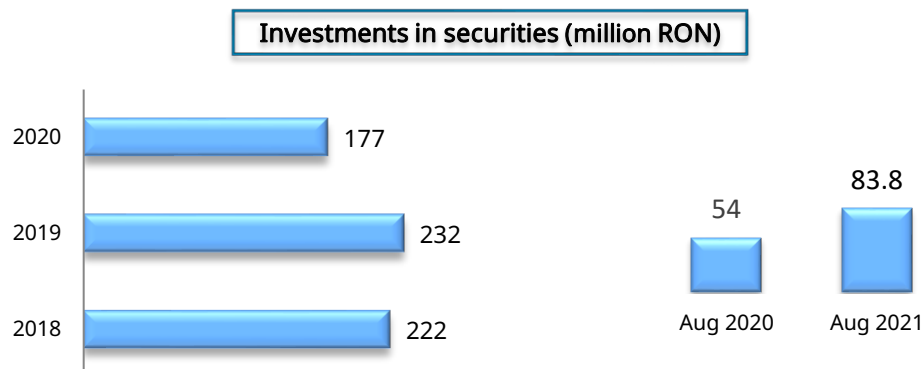
phone: 004 0234 576740; fax: 004 0234 570062

e-mail: office@evergent.ro; website: www.evergent.ro

SHAREHOLDERS	Residents weight in share capital %	Non-residents weight in share capital %	Total shareholders
Individuals	37.0	0.4	5,746,851
Corporate	45.9	16.7	171
TOTAL	82.9	17.1	5,747,022



The net result consists of the net profit and the net gain from the sale of assets reflected in the retained earnings - accounting treatment in accordance with IFRS 9.



Assets under management

VALUES / STRUCTURE

Number of shares	989,479,176	
	RON	EUR*
Fair value	0.1	0.02
Share Capital	98,947,918	20,051,049
Market cap	1,335,796,888	270,689,164
Total Assets	2,517,704,212	510,193,769
Net Assets Value	2,334,366,797	473,041,825

*EUR/RON = 4.9348 (www.bnr.ro)

RON/share	Jun 2021	Jul 2021	Aug 2021
NAV/share**	2.2829	2.3066	2.3893
Price EVER	1.3500	1.3250	1.3500
Discount %	41	43	43

** The number of shares used in the calculation of the NAV/share (977,023,003) has resulted by decreasing from the total number of shares the shares acquired under the ongoing buyback program / public share buyback offer (according to the applicable regulations).

ASSETS STRUCTURE	% of total assets
Shares, of which	75.3
• listed	67.0
• unlisted	8.3
Non – UCITS Securities (fund units)	12.9
Monetary instruments (deposits, cash)	9.6
Other assets	2.2

SECTOR EXPOSURE (share portfolio)	% of total assets
Financial	45.4
Energy	10.6
Manufacturing	7.9
Real estate	6.0
Other	5.4

TOP COMPANIES	Weight > 1% of total assets
BANCA TRANSILVANIA	39.0
ROMGAZ	9.5
AEROSTAR	6.6
BRD	4.2
PROFESSIONAL IMO PARTNERS	2.3
AGROINTENS	1.9
TESATORIILE REUNITE	1.7
STRAULESTI LAC ALFA	1.7
SIF TRANSILVANIA	1.7
AGROLAND CAPITAL	1.7
NUCLEARELECTRICA	1.1
TOTAL	71.4



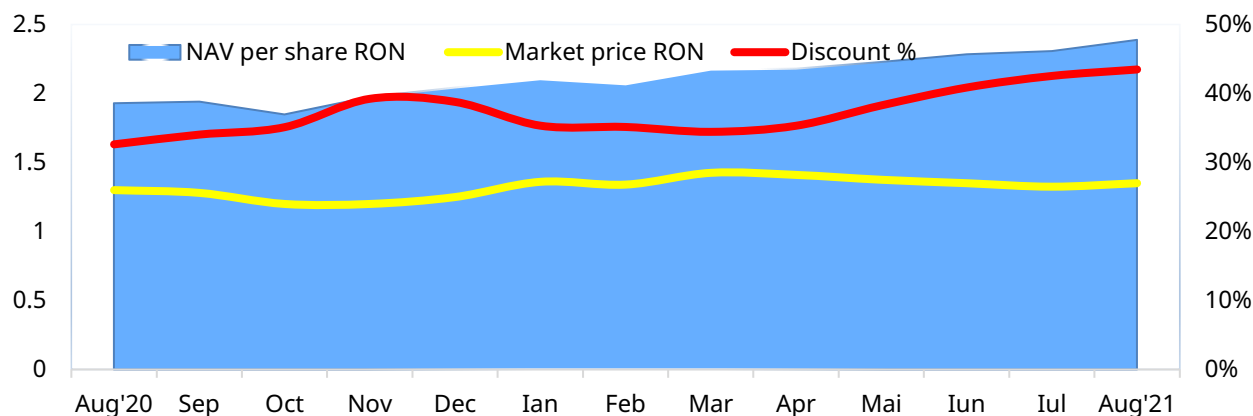
PERFORMANCE / RISK INDICATORS

Returns: EVER NAV/share. EVER share. BET FI

Returns on August 2021 (%)	EVER Share	BET-FI	EVER NAV/share
1 M	1.89	-0.64	3.59
3 M	-1.82	6.30	7.27
6 M	0.75	10.77	15.67
12 M	3.85	22.97	23.87

Risk Analysis (1Y. daily series): EVER share / BET-FI

Indicator	EVER share	BET-FI
Annualized volatility (%)	17.88	11.16
Beta	0.86	1.00



✓ The 20-day VaR (historical method) on total assets exposed to market risk is 10.44%, within the internal limit approved for the market risk profile assumed – medium risk (25%).

Private Equity Investments EVERGENT Investments Group



"BABA NOVAC RESIDENCE"

developed by Tesatorile Reunite SA - ownership 100%

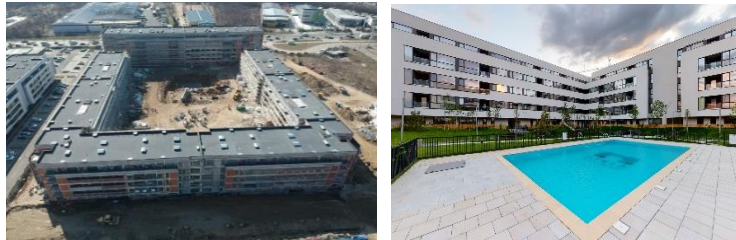
- ✓ Location: Bucharest, 61 Eufrosina Popescu street, sector 3
- ✓ 6 blocks with 363 apartments. 3 development phases
- ✓ Project completed
- ✓ Preparing a new real estate project by purchasing a land plot in the North of the Capital



"ATRIA URBAN RESORT"

developed by Straulesti Lac Alfa SA – ownership 50%

- ✓ Location: Bucharest, 242 Soseaua Chitilei, sector 1
- ✓ 1381 apartments. land of 9 ha. 4 development phases
- ✓ Phase 1 (160 apartments): completed in December 2019
 - 97% of the apartments are sold
- ✓ Phase 2 (398 apartments): execution works in progress
 - about 61% of the apartments are pre-contracted
- ✓ Phase 3: design in progress



"VERANDA MALL"

developed by Professional IMO Partners SA - indirect ownership 37%

- ✓ Location: Bucharest, 23 Ziduri Mosi street, sector 2
- ✓ Occupancy rate – 98% (contracts)
- ✓ Business affected by the new SARS-CoV-2 coronavirus



"BLUEBERRIES FARM EXTENSION" -

developed by Agrolintens SA - ownership 100%

- ✓ Location: Vistea and Mandra villages in Brasov county; Popesti village in Arges county
- ✓ The design of the "Cold Warehouse" Vistea farm is in progress



"MECANICA CEAHLAU" Piatra Neamt - ownership: 73%

- ✓ Manufactures and sells agricultural machines for working the soil. seeding. crop maintenance
- ✓ Distributes: STEYR tractors. PROJECT herbicide equipment; STOLL loaders



"IASI REAL ESTATE PROJECT"

developed by Agroland Capital - ownership 100%

- ✓ Location: Iasi. 2 Primaverii street
- ✓ Activities related to obtaining the Zonal Urbanism Plan

